



Hudson River Valley Resorts is preparing a Draft Environmental Impact Statement. Numerous outstanding scoping issues must be addressed, and others corrected, before NYSDEC can release a DEIS for public review and comment.



Williams Lake With No Outflow

Water Supply The surface watershed of Williams Lake is small. HRVR plans to use the lake as their water source because it is *“self-supporting in terms of its water requirements during a drought.”* They claim that lake outflow is continuous year round and has never fallen below 187,000 gallons per day. In reality, the lake outflow diminishes and goes dry for months. Over time, it is possible that over-withdrawal may “mine” or lower the level of water in the lake if more water is used than is naturally replenished each year. This poses a long-term financial risk to HRVR and the community.

Wetland, Fishery & Bathymetry



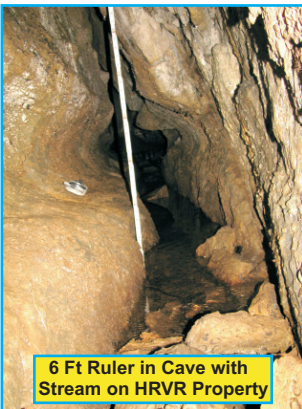
Williams Lake hosts a significant Federal and State wetland with a pristine fishery and ecosystem. Lowering the lake level even one foot may result in damage to both the lake’s ecology and the State wetland just west of the lake that requires periodic lake outflow for its health.



44-Acre Williams Lake and Expansive Wetland Fringe

HRVR has asked NYSDEC to accept their assessment of lake volume based on an old bottom topography (i.e., bathymetric) map whose source and depth-measuring methodology are unknown. Exacting lake depth data is needed when assessing water resources.

Karst & Watershed Hydrology

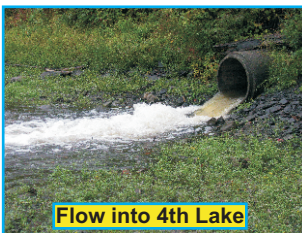


6 Ft Ruler in Cave with Stream on HRVR Property

Stormwater contaminants from site development may adversely impact the water quality of Fourth Lake and bat hibernacula via both surface and groundwater flow. HRVR steadfastly maintains that there are no karst aquifers on their property despite the presence of natural caves, sinkholes, sinking streams, and a disappearing Fourth Lake that loses millions of gallons of water each day through unidentified pathways. The scoping document requires HRVR to conduct tracer tests to determine groundwater flow routes and potential downstream impacts - including where Fourth Lake water surfaces. A key HRVR hydrology map shows all surface water draining away from rather than into Fourth Lake. The hydrology must be corrected.



Fourth Lake Down 20-25 Ft. Burmeister Oct. 2003 Photo



Flow into 4th Lake

Waste Water

HRVR has not clarified their plans for project wastewater. The current plan no longer shows an on-site sewage treatment plant. Two options being considered are a connection to the Town wastewater treatment plant, which is already at capacity, or discharge of HRVR treated effluent to a small stream that parallels Binnewater Rd., which could damage a downstream wetland and adversely impact property owners.

Prepared
3-18-11 by:

Paul A. Rubin
HydroQuest
P.O. Box 387
Stone Ridge, N.Y. 12484
845-657-8111
hydroquest@yanoo.com